

Features

- Bar manifolds for mounting several valves with one pressure and tank line supplying each parallel valve station.
- Material option of clear anodized aluminum 6061-T6 (3000PSI rated) or zinc plated C4: high strength carbon steel (5000psi rated)
- Includes mounting feet and hardware



Ordering Details

M	Manifold	Code	Size
P	Parallel Circuit	4	NG4 (D02)
A	Material: A=Aluminum, S=Steel	6	NG6 (D03)
6-	Sub plate (Valve) Mounting Size	10	NG10 (D05)
4-	Number of Stations: 2, 3, 4, 5 or 6	10H	NG10 (D05) 2-Stage
O10	P Port Size	16	NG16 (D07)
O10	T Port Size		
O8-	A and B Port Size		
M-	Metric Bolts thread		
1	Series		

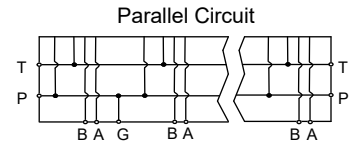
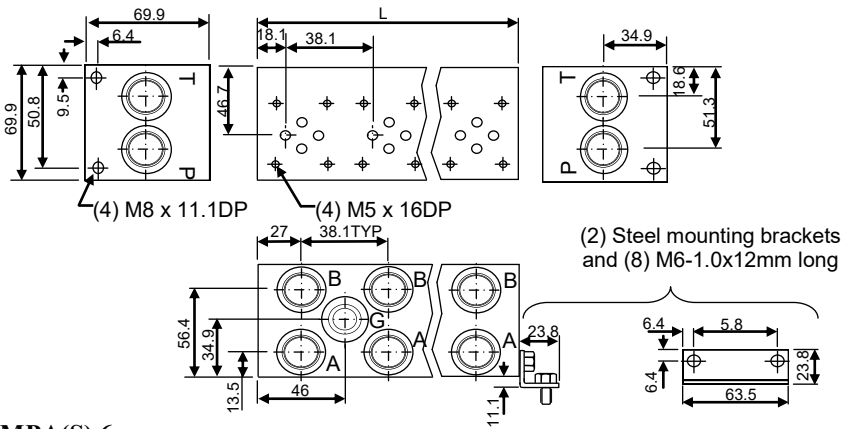
Size	P Port Code	T Port Code	A and B Port Code	Gauge Port Size, SAE	X Port, SAE O-Ring	X Port, SAE O-Ring
4 (D02)	O8	O8	O6	-6, 9/16-18	-	-
6 (D03)	O10	O10	O8		-	-
10 (D05)	O12	O12	O8		-	-
10H (D05H)	O12	O16	O12		-6, 9/16-18	-4, 7/16-14
16 (D07)	O12	O16	O12		-6, 9/16-18	-4, 7/16-14

Port Code	Nominal Port Size Inch	SAE O-Ring boss thread details
O4	1/4	-4, 7/16-14
O6	3/8	-6, 9/16-18
O8	1/2	-8, 3/4-16
O10	5/8	-10, 7/8-14
O12	3/4	-12, 1 1/16-12
O16	1	-16, 1 5/16-12

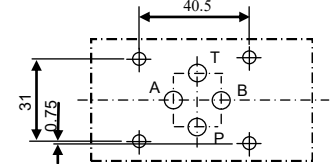
Example Part Number: MPA6-4-O10O10O8-M-1

Dimensional Data, (Dimensions in mm)

MPA(S) 4

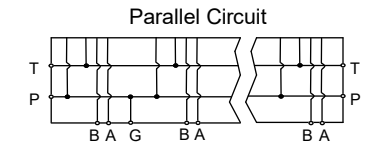
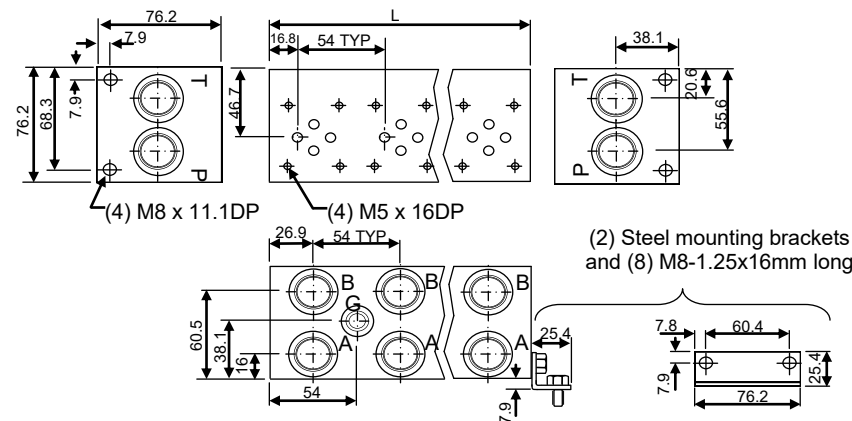


NG6 (D03) Mounting Pattern

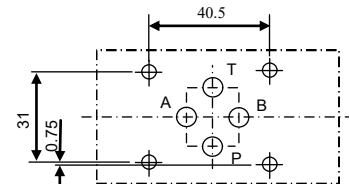


No. of Stations	2	3	4	5	6
L Dimension, mm	92.1	130.2	168.3	206.4	244.5
Weight, A-Aluminum, kg	2.5	3	4	4.5	5.5
Weight S-Steel, kg	4	5.5	7	9	10

MPA(S) 6



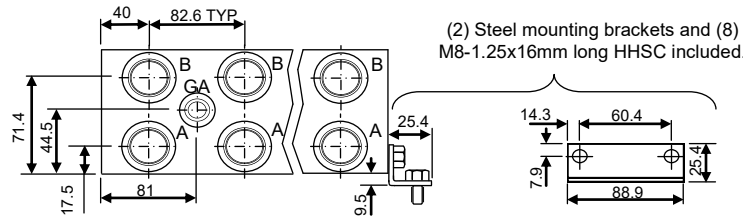
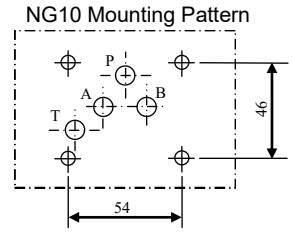
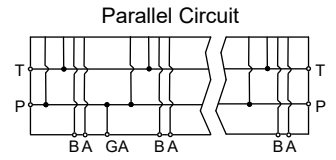
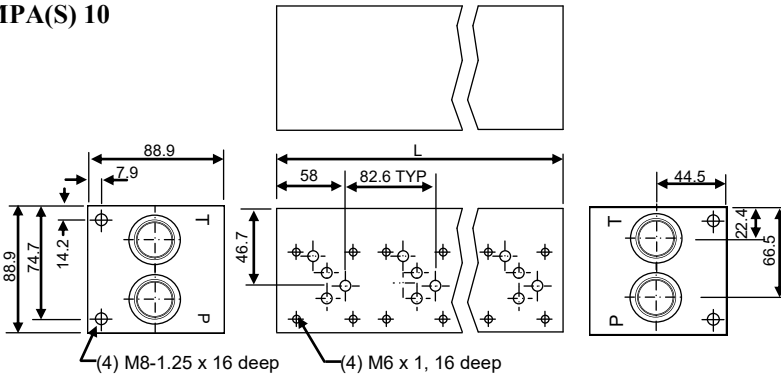
NG6 (D03) Mounting Pattern



No. of Stations	2	3	4	5	6
L Dimension, mm	108	162.1	215.9	270	323.9
Weight, A-Aluminum, kg	1.81	2.72	3.63	4.08	4.99
Weight S-Steel, kg	4.54	6.80	9.07	11.34	13.61

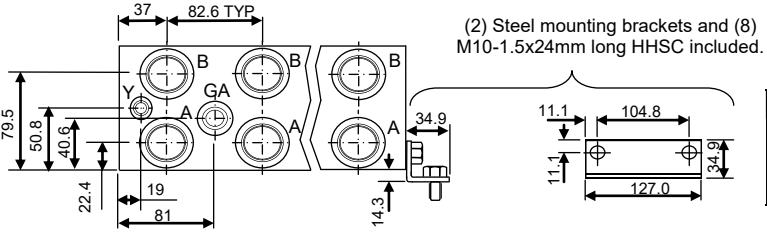
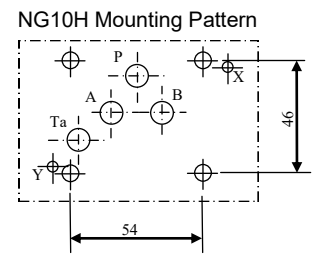
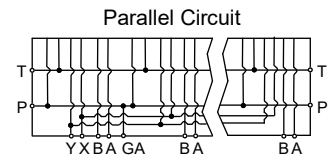
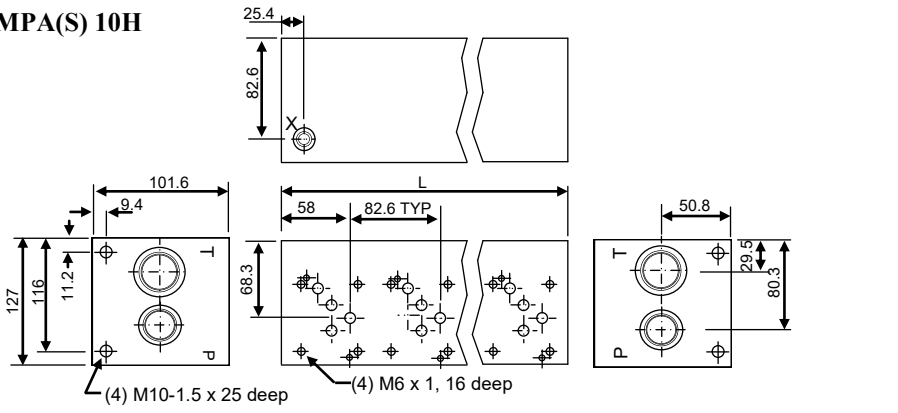
Dimensional Data, (Dimensions in mm)

MPA(S) 10



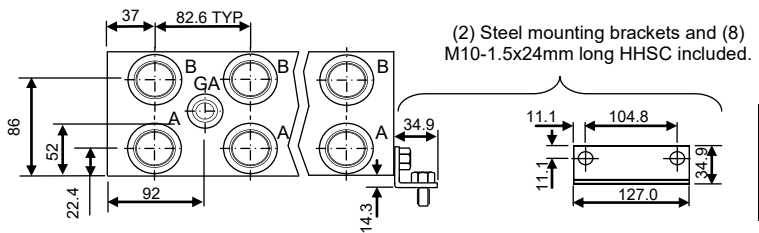
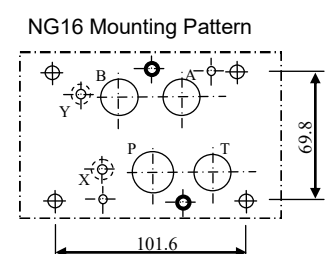
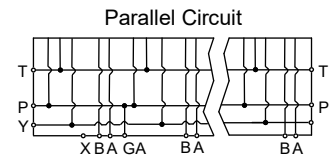
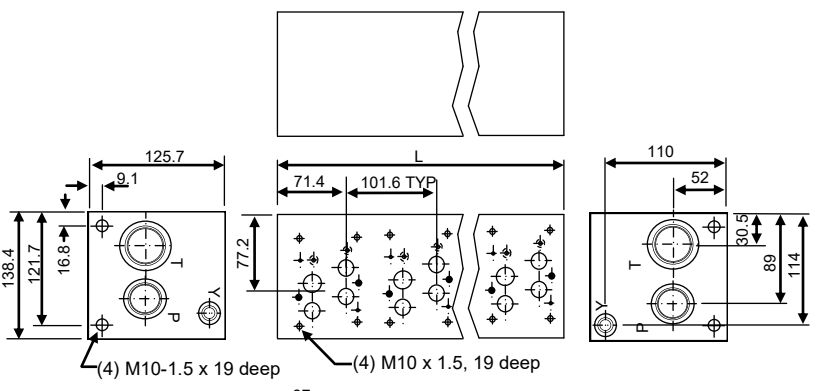
No. of Stations	2	3	4	5	6
L Dimension, mm	165.1	247.7	330.2	412.8	495.3
Weight, A-Aluminum, kg	3.8	5.6	7.4	8.5	10.3
Weight S-Steel, kg	9.53	14.06	18.6	23.59	28.12

MPA(S) 10H



No. of Stations	2	3	4	5	6
L Dimension, mm	165.1	247.7	330.2	412.8	495.3
Weight, A-Aluminum, kg	5.9	8.62	11.34	14.52	17.24
Weight S-Steel, kg	15.42	23.13	30.84	38.56	45.81

MPA(S) 16



No. of Stations	2	3	4	5	6
L Dimension, mm	203.2	304.8	406.4	508	609.6
Weight, A-Aluminum, kg	9.5	14.5	19.5	24.0	29.0
Weight S-Steel, kg	25.4	38.1	50.8	63.5	76.2